

Blanket Wrap

Easy Knitting

MEASUREMENTS

One Size Fits All

Width (approx)	cm	98
Length (approx)	cm	56

MATERIALS

CLECKHEATON COUNTRY 8 PLY 50g balls

Main Colour (M – 0050 Cream)	18
Contrast Colour (C – 2365 Almond)	4

Use only the yarn specified. Other yarns are likely to produce different results. Quantities are approximate as they can vary between knitters. Check the ball bands to ensure all yarn of the same colour is from the same dye lot.

NEEDLES AND EXTRAS

- 1 pair 4.5mm (UK 7) knitting needles or size needed to give correct tension.
- wool needle for finishing.

TENSION

This wrap has been designed at a tension of 20 sts and 40 rows to 10cm over garter st, using 4.5mm needles.

To work a tension square, using 4.5mm needles, cast on 30 sts.

Work 60 rows garter st (every row knit). Cast off loosely.

Check your tension carefully.

If less sts to 10cm use smaller needles, if more sts use larger needles.

NOTE – This wrap is worked on larger needles and at a looser tension than usually recommended for this yarn.

STRIP 1 (make 2)

Using 4.5mm needles and **C**, cast on 33 sts.

BEGIN GARTER PATT –

1st row (wrong side) – Sl 1 (knitways), knit to end.

Rep last row for Garter Patt.

Cont in Garter Patt until **Strip 1** measures 8cm from beg, working last row on wrong side.

BEGIN RIDGE PATT –

Using **M**, **1st row** – Sl 1 (knitways), knit to end.

2nd row – Sl 1 (purlways), purl to end.

3rd row – As 1st row.

4th row – As 1st row.

Last 4 rows form Ridge Patt.

Cont in Ridge Patt until **Strip 1** measures approx 20cm from beg, ending with a 2nd patt row.

BEGIN GARTER PATT –

Work 10 rows Garter Patt in stripes of 2 rows **C** and 2 rows **M**.

Using **M**, cont in Garter Patt until **Strip 1** measures 42cm from beg, working last row on wrong side.

BEGIN MOSS PATT –

1st row – Sl 1 (knitways), * P1, K1, rep from * to end.

Rep last row for Moss Patt.

Cont in Moss Patt until **Strip 1** measures 56cm from beg, working last row on wrong side.

Cast off loosely in patt.



TIP

For abbreviations and more information on knitting techniques, please see cleckheaton.com.au

STRIP 2 (make 2)

Using 4.5mm needles and **C**, cast on 67 sts.

BEGIN GARTER PATT –

Work in Garter Patt as for **Strip 1** until **Strip 2** measures 8cm from beg, working last row on wrong side.

BEGIN RIDGE PATT –

Using **M**, work in Ridge Patt as for **Strip 1** until **Strip 2** measures approx 20cm from beg, ending with a 2nd patt row.

BEGIN GARTER PATT –

Work 10 rows Garter Patt in stripes of 2 rows **C** and 2 rows **M**.

Using **M**, cont in Garter Patt until **Strip 2** measures 56cm from beg, working last row on wrong side.

Cast off loosely knitways.

STRIP 3 (make 2)

Using 4.5mm needles and **M**, cast on 43 sts.

BEGIN GARTER PATT –

Work in Garter Patt as for **Strip 1** until **Strip 3** measures 6cm from beg, working last row on wrong side.

Work 10 rows Garter Patt in stripes of 2 rows **C** and 2 rows **M**.

Using **M**, cont in Garter Patt until **Strip 3** measures 16cm from beg, working last row on wrong side.

Using **C**, knit 1 row.

BEGIN MOSS PATT –

Cont in **C**, working in Moss Patt as for **Strip 1** until **Strip 3** measures 22cm from beg, working last row on wrong side.

BEGIN GARTER PATT –

** Using **M**, work in Garter Patt as before until **Strip 3** measures 29cm from beg, working last row on wrong side.

Work 10 rows Garter Patt in stripes of 2 rows **C** and 2 rows **M**.

BEGIN RIDGE PATT –

Using **M** for rem, work in Ridge Patt as for **Strip 1** until **Strip 3** measures approx 56cm from beg, ending with a 2nd patt row.

Cast off loosely knitways.

STRIP 4 (make 2)

Using 4.5mm needles and **M**, cast on 57 sts.

BEGIN GARTER PATT –

Work in Garter Patt as for **Strip 1** until **Strip 4** measures 6cm from beg, working last row on wrong side.

Work 10 rows Garter Patt in stripes of 2 rows **C** and 2 rows **M**.

Using **M**, cont in Garter Patt until **Strip 4** measures 16cm from beg, working last row on wrong side.

Using **C**, cont in Garter Patt until **Strip 4** measures 22cm from beg, working last row on wrong side.

Work as for **Strip 3** from ** to end.

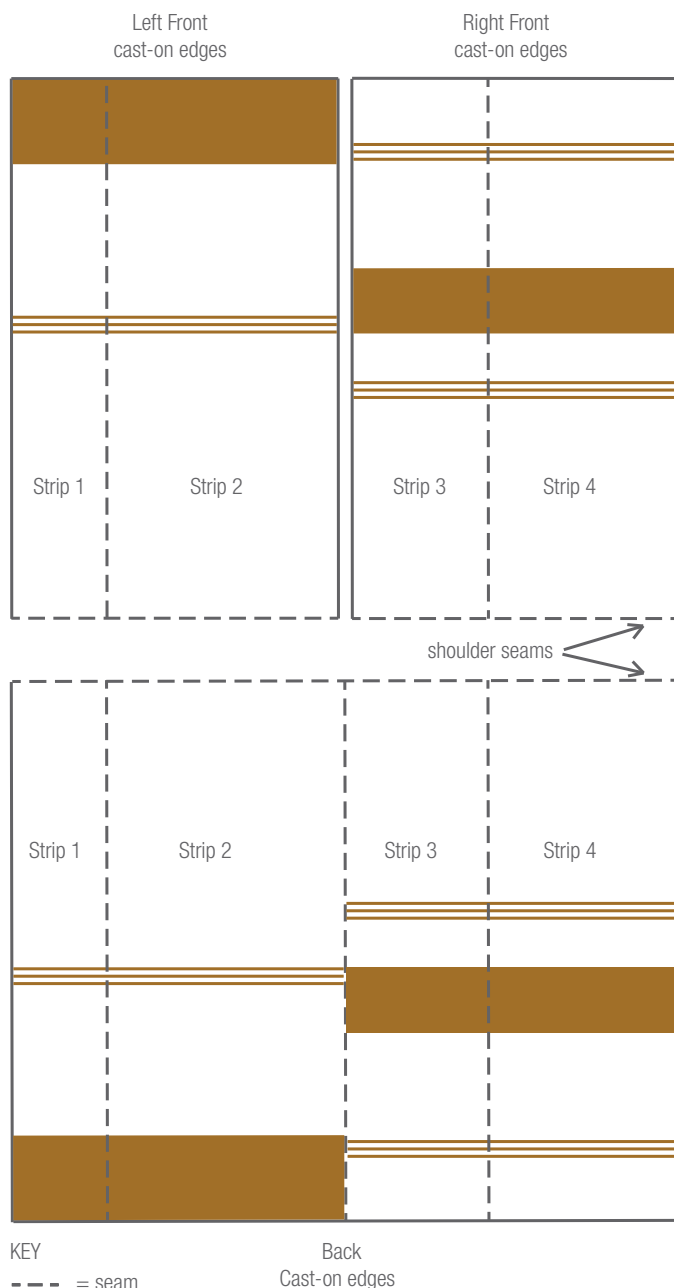
TO MAKE UP

NOTE – We recommend using mattress stitch to sew up your Blanket Wrap. DO NOT PRESS. Following Assembly Diagram, join strips 1 and 2 together, then strips 3 and 4 together, matching stripes of pattern across pieces. Join centre back seam. Join shoulder seams.

RUNNING STITCH EMBROIDERY –

Using 2 strands of **C** together and Running Stitch, embroider 3 lines on Strip 1, beginning one stitch from Strip 2 seam and with 3 stitches between lines, then 2 lines on Strip 3, beginning 3 stitches from Strip 4 seam and with 3 stitches between lines, from lower edge of back to lower edge of front, as pictured. Sew in all ends.

ASSEMBLY DIAGRAM



CONTACT US

Level 7, 409 St Kilda Road, Melbourne, VIC 3004
A.B.N 85 055 366 590

T +61 3 9380 3888

F +61 3 9820 0989

cleckheaton.com.au

[f /auspinners](https://www.facebook.com/auspinners)

[@auspinners](https://www.instagram.com/auspinners)

HELPLINE

For Australian residents – If you are using the recommended yarn and need help with your pattern, please phone 03 9380 3888 or Toll Free 1800 337 032 (9am to 4pm Mon to Fri E.S.T.).

If you live outside Australia, please see our postal address and website details.

*Stuck?
We're here
to help!*

We have made every effort to ensure that these instructions are accurate and complete. We cannot be responsible for variations in individual work, human error or if yarn other than the recommended Cleckheaton yarn is used. This publication is protected by copyright. Cleckheaton Country 8 ply is a trade mark of Australian Country Spinners Pty Ltd. Yarn colours shown may vary slightly due to the printing process and different monitor settings.